

OPENING WEST OF BIG-INDIAN-FIR COL

230-72

with Tom Clark, 7/16/15

COMPASS BAROMETER

Site	p	Δp	Δe	e _{calc}	e _{map}	time	R ₁
(Z) Big Indian hamlet	30.42	-0.91	-834	1256'	1210'	—	$\frac{3180' - 2090'}{29.51' - 28.52''} = \frac{1090'}{1.19''} = 0.916$
(Y) Winnisook pass	28.87	+0.64	+586	2676'	2680'	—	
(A) Trailhead	29.51	0.00			2090'	9:30	$R_2 = \frac{1090'}{29.50'' - 28.32''} = \frac{1090'}{1.18''} = 0.924$
(B) Deer fence junction	29.21	0.30	275	2365'	2460'	10:05	
(C) Lean-to junction	29.26	0.25	229	2319'	2330'	10:40	
(D) West trib. confluence	29.20	0.31	284	2374'	2390'	11:04	
(E) 42" SUG	29.16	0.35	321	2411'		11:15	
(F) Ilex montana begin	29.00	0.51	467	2557'		11:35	
(G) Lunch in HEM grave	28.94	0.57	522	2612'		11:40 to 12:05	
(W) Terrace in HEM grave	28.84	0.67	614	2704'		12:17	
(I) 35" YB	28.63	0.88	806	2896'		—	
(J) End HEM grave?	28.58	0.93	852	2942'		—	
(K) Two 7" fir	28.53	0.98	898	2988'		—	
(L) last single hemlock	28.50	1.01	925	3015'		—	
(M) terrace, bare steep	28.46	1.05	962	3052'		—	
(N) top steep ledges	28.29	1.22	1118	3208'		1:13	
(O) on thick flat	28.16	1.35	1237	3327'		1:35	
(P) begin descent	28.14	1.37	1255	3345'		1:50	
(Q) OPEN AREA	28.14 S	1.37	1255	3345'	3360'	2:00 to 2:40	
(R) COL (BISCUIT NOTCH)	28.32	1.19	1090	3180' ✓	3180'	3:00	
	28.32	1.18	1090	3180' ✓	3180'	3:00	
(S) SUG Cove	28.44	1.06	979	3069'		—	
(T) Ash	28.92	0.58	536	2626'		4:00	
(U) East tributary ^{50'} _{above}	29.10	0.40	370	2460'	2470'	4:35	
(CC) On trail at ford	29.20	0.30	277	2367'	2360'	10:55 + 4:55 to 5:00	
(A) OUT	29.50	0.00			2090'	6:15	
(V) Biscuit Brook flow	28.60	0.90	832	2922			

* (Q) is not the same elevation as (P), but 10' to 15' below (P)

230-73

ANSCO BAROMETER

site	p	Δp	Δe	e calc	e map	time
	30.15	-0.68	-764	1326'	1210'	
	28.98	0.49	+551	2641	2680'	
Trailhead	29.47	0.00	$R_3 = 1.124$	2090'	2090'	
	29.18	0.29	326	2415'	2460'	
	29.21	0.26	292	2382	2320'	
	29.20	0.27	303	2393'	2390'	
	29.14	0.33	371	2461'		
	29.00	0.47	529	2618'		
	—	—	—	—	—	
	28.90	0.57	641	2731		
	—	—	—	—	—	
	28.72	0.75	843	2933		
	—	—	—	—	—	
	28.51	0.96	1079	3169		
	28.40	1.07	1202	3293		
	28.38	1.09	1225	3315'		
	28.39	1.08	1214	3304'	3360'	
COL	28.50	0.97	1090	3180' ✓	3180'	
	—	1.07	1090	3180' ✓	3180'	
	—	—	—	—	—	
	29.03	0.54	550	2640'		
	29.20	0.37	377	2467'	2470'	
	29.28	0.29	296	2386	2360'	
Trailhead	29.57	0.00	—	—	2090'	

- (W)
- (Y)
- (A)
- (B)
- (C)
- (D)
- (E)
- (F)
- (G)
- (H)
- (I) (J)
- (K)
- (L) (M)
- (N)
- (O)
- (P)
- (Q)
- (R)
- (S)
- (T)
- (U)
- (V)
- (A)

see page see page

see page

$$\frac{1090'}{29.47'' - 28.50''} = \frac{1090'}{0.97''} = 1.124$$

$$\frac{1090'}{29.57'' - 28.50''} = \frac{1090'}{1.07''} = 1.019$$

$$R_4 = 1.019$$

Vegetation

Seep swamp just before (C) ^{2320'} is only 3 or 4" deep with a small inlet rill crossing the trail on the N side.

Pyrola elliptica in flower on trail between (C) and the east tributary greatly altered by "Hurricane Irene" on 8/28/11. Trail here is narrow built into the hillside as a terrace.

2360' (CC) Biscuit Brook ford: Stream bed here is bright red shale bright green moss (NOT Fountainis) 10:55AM

2618' (F) 2557' Ilex montana begin here, at 1st scattered. Bottom of hemlock grove is just above (see pp. 230-32 to 35, elev. ca. 2650)

(G) 2612' In hemlock grove. 1^o, but none > 36". Hemlock seedling N of (C) on trail 16" tall and about 8y old, growing in height about 2" / y.

(H) 2704' / 2731' Flat terrace in hemlock grove

(I) 2896' Many PBS over 24", the max. here 35".

(J) 2942' Hemlocks, penultimate, approx-upper limit of grove

(K) 2933' / 2938' 1st two firs, about 7" dbh.

(L) 3015' Last individual hemlock, well above the grove. Repr in the grove nil.

See p. 230-34 for highest elev. hemlock obs. in 1999 at 2945' ft. at (U)

(M) 3052' Terrace below steepest pitch on the spur crest. One SUB on the flat, plus many RM-BC-B-PB-MO-VA and 1st SCAMPLOPTEA (by size alone T-d)

230-74

(N) 3208' Top of 2 ledges, easily circumvented on east side via a steep pitch only. B dom + BC-RM

(O) 3327' On thickly-vegetated 3400' flat. Slow-gang with no views for orientation

(P) 3345' North edge of SE spur of Big Indian Mtn. Beyond, spur descends to Elk Bushkill. A narrow ledge points east as a promontory guiding us down to the opening at (Q), only about 15' below. Seatt. FIR. BC-B-RM dom. YB-VA, CB abun, SCAMPRL, SORBUS seedlings.

(Q) 3360' map Opening. See next page for flora and discussion →

(R) 3180' Col, the Biscuit Notch (MK name, as applied to Pigeon Notch) or old name? MO-VA-B-BC-YB-SORBUS seedlings. NO SUB or FIR or ledges exposed.

(S) 3069' SUB re-enter not far below notch at the top of a long seep following down the rills (narrow) that form Biscuit Brook. Typical seep veg. SCAMPRL.

(V) 2922' First obs on water flowing in head of Biscuit Brook. SCAMPRL out.

(T) 2626' / 2640' 28" ASH. Only one seen in these headwaters

(U) 2470' Cross East tributary about 50ft above its confluence with Biscuit. Map confluence is at 2420'

NO E horizons noted in hemlock grove, but then hardly any exposed mineral soil, gullies, or erosion.

From 8/19/75 with Dan Spada, the only observations were the (p. 230-1) elevation 3357 and that it was the largest opening. ^{#628} No flora.

No detail. No photos. Does Dan have any detail? Any detail on soil pit #628??? ^{Yes} ^{Sample} *

Because no detail is available from 1975, it is difficult to measure how much the opening has closed in. The current 2015 opening is only several feet to ca 10 ft wide and maybe 50 ft long. One small bedrock exposure. Long axis of opening runs west-east with an intermittent 3500 club head path leading down to the Notch. Vegetation around opening today is thick & stunted: Trees 15-25-30 ft high.

FIRs about 25% old, 15 to 30' tall. Leaders growing 1 to 2 ft/year and branches 6"/year.

Two mature SORB 25 ft high some smaller.

BC-RM-MO

Shrub: ILEX MONT, NEMO, VACCINIA AZALEA, VACC MYRT

CC-CB-OK-AN-SCAMPYL-TB-COPTIFME - PLEUROZIVM in opening.

* Flora has NOT changed since 1975, but has the size of the opening?

Smaller openings on this spur, just above & below are typical DP, without bedrock exposures. Smaller openings listed in 8/19/75 notes

* Soil pit #628 (page 230-12) lists flora & soil description, but NO clue to size of opening.

Previous field notes from Biscuit Brook headwaters area:

8/19/75 pp 230-1 & 2 With Dan Spada, Fir to Big Indian Mtns

8/21/99 pp 230-32 to 35 Hemlock grove

6/31/04 pp 231-1 to 3 'Neutral' Springs

6/13/04 pp 231-4 to 7A Ledges above "Neutral" Springs with Louise Moore

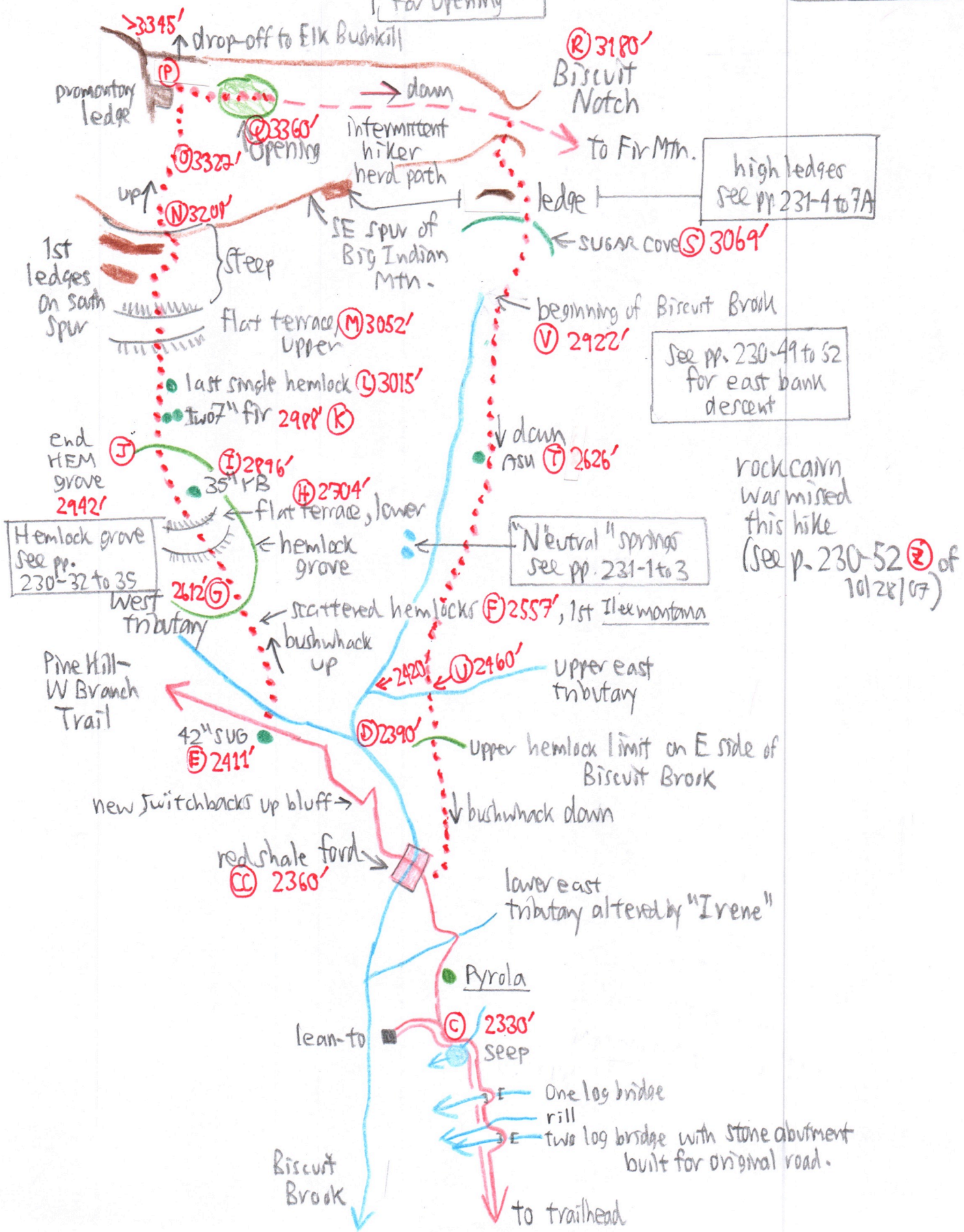
10/28/07 pp 230-49 to 52 With CCOD staff from Elk Bushkill

10/28/07 p-230-53 & 54 Summary sketch map.

Sketch map

230-76

see pp. 230-1+2 for Opening



See pp. 230-49 to 52 for east bank descent

rock cairn was missed this hike (see p. 230-52 of 10/28/07)

"Neutral" springs see pp. 231-1 to 3

Hemlock grove see pp. 230-32 to 35 west tributary

One log bridge rill
Two log bridge with stone abutment built for original road.